



**WHITESTONE**  
solar farm

# **WHITESTONE SOLAR FARM**

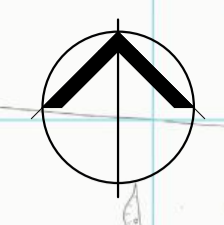
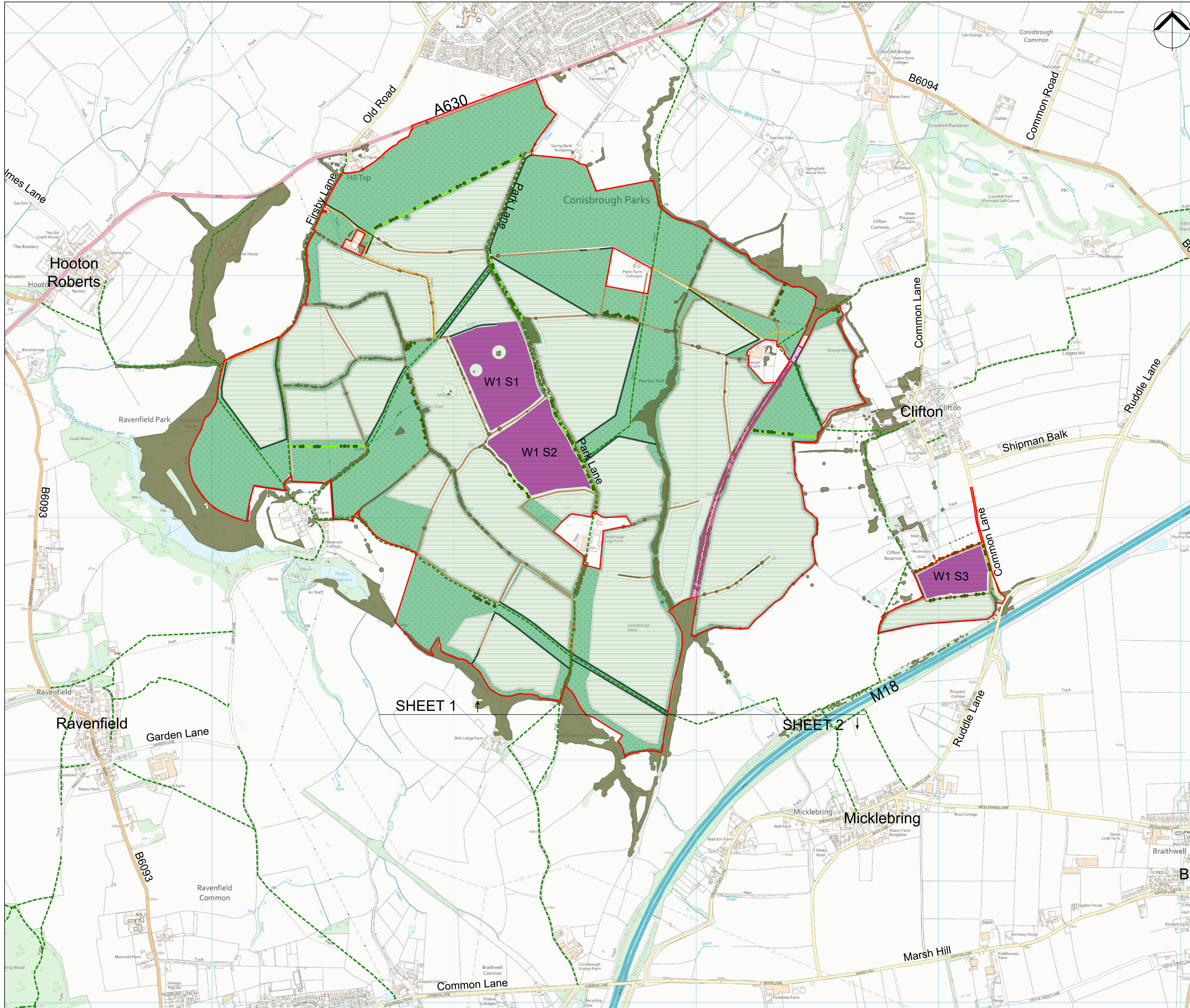
## **Draft Environmental Statement**

**Volume 3, Appendix 5.3: Indicative Mitigation Masterplan**

EN0110020

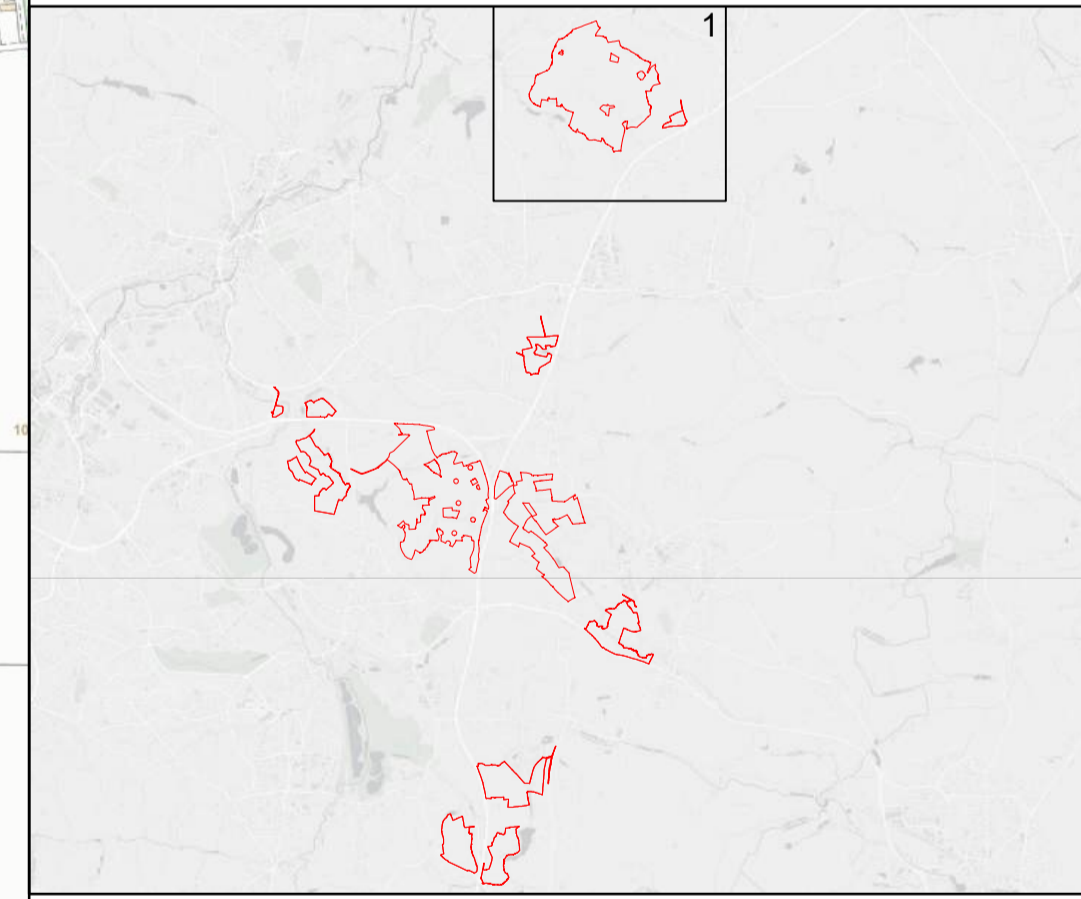
September 2025

[whitstonesolarfarm.co.uk](http://whitstonesolarfarm.co.uk)



- Key**
- Order Limits
  - Potential solar panels and associated infrastructure
  - Potential landscape mitigation and enhancement areas
  - Existing hedgerows to be retained and enhanced
  - Existing vegetation
  - Potential hedgerows
  - Potential hedgerows with trees
  - Potential scattered trees
  - Shade tolerant seed mix (below solar panels)
  - Existing Public Rights of Way
  - Potential permissive paths
  - Potential substation and BESS or solar panels
  - Potential substation or solar panels
  - Potential substation (no potential for solar panels)
  - Proposed location for new National Grid substation at Brinsworth (Brinsworth B)
  - Potential cable and vehicle crossing points
- WX SX Substation reference  
 WS1, 2, 3 = Whitestone 1, 2 and 3  
 S = Satellite substation, P = Primary substation.

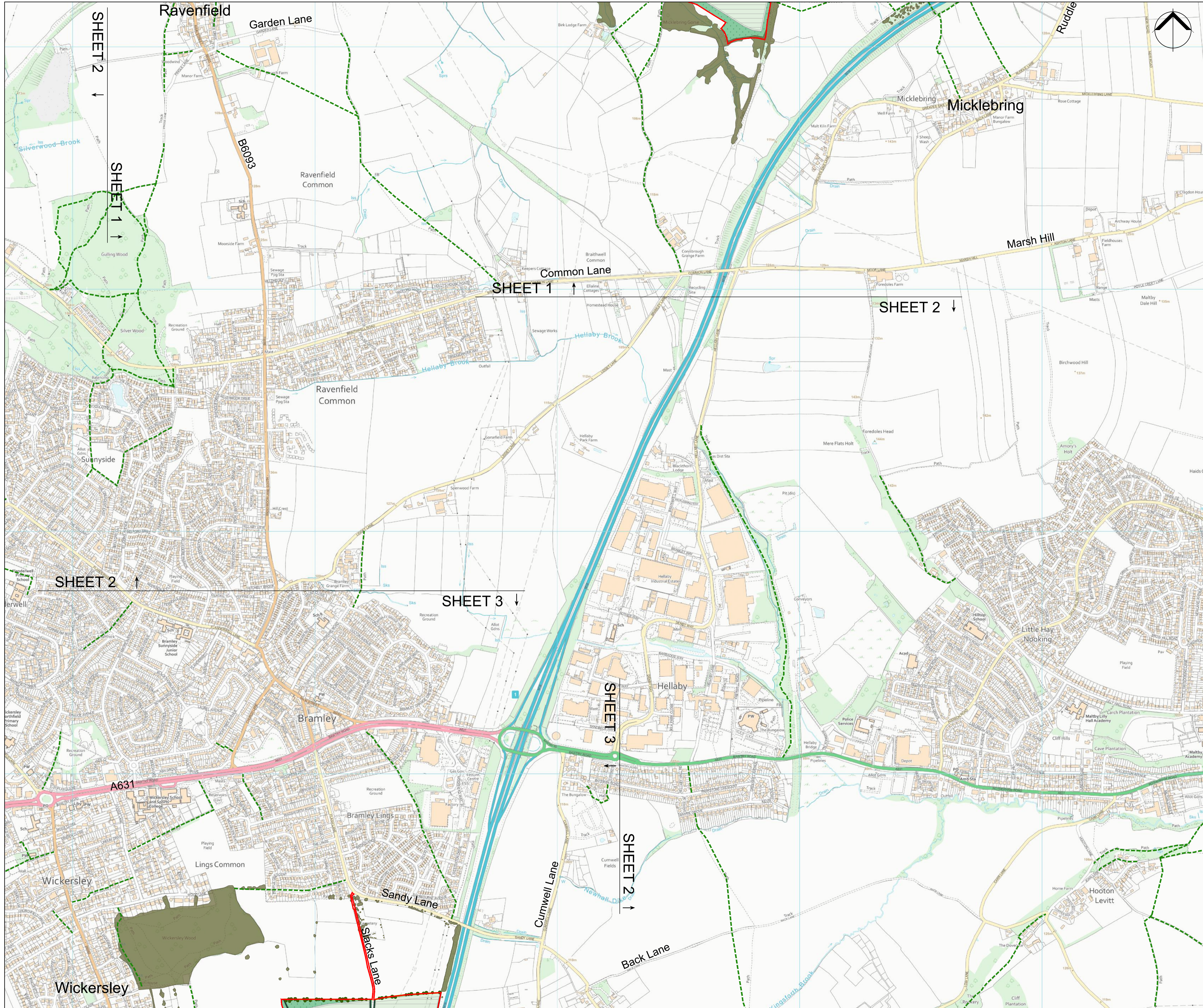
Disclaimer: The Proposed DCO Limits are indicative and subject to revision and change



SCALE: 1:7,500	VERSION: A01
SIZE: A1	DRAWN: IE
PROJECT: Whitestone Solar Farm	CHECKED: SG
DATE: 11/09/2025	APPROVED: SG

**Indicative Mitigation Masterplan  
 Sheet 1 of 8  
 Whitestone Solar Farm**



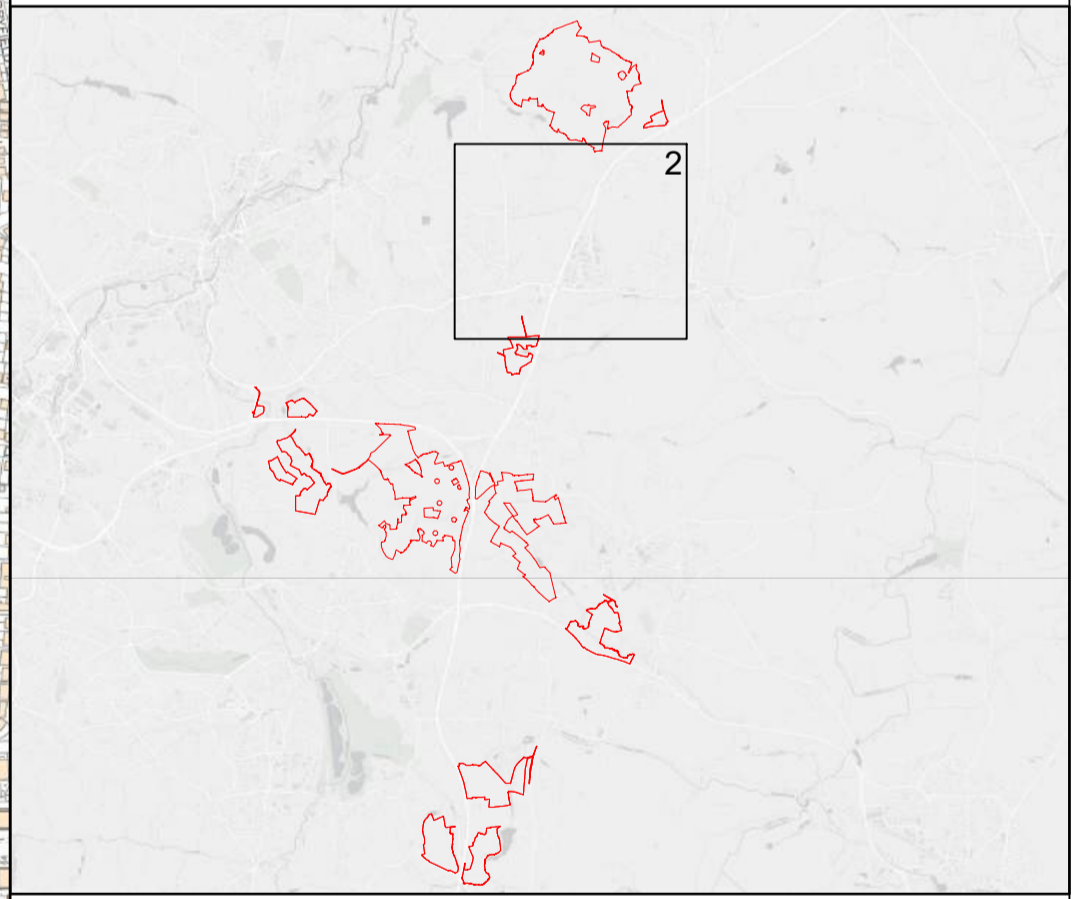


**Key**

- Order Limits
- Potential solar panels and associated infrastructure
- Potential landscape mitigation and enhancement areas
- Existing hedgerows to be retained and enhanced
- Existing vegetation
- Potential hedgerows
- Potential hedgerows with trees
- Potential scattered trees
- Shade tolerant seed mix (below solar panels)
- Existing Public Rights of Way
- Potential permissive paths
- Potential substation and BESS or solar panels
- Potential substation or solar panels
- Potential substation (no potential for solar panels)
- Proposed location for new National Grid substation at Brinsworth (Brinsworth B)
- Potential cable and vehicle crossing points

**WX SX** Substation reference  
 WS1, 2, 3 = Whitestone 1, 2 and 3  
 S = Satellite substation, P = Primary substation.

Disclaimer: The Proposed DCO Limits are indicative and subject to revision and change

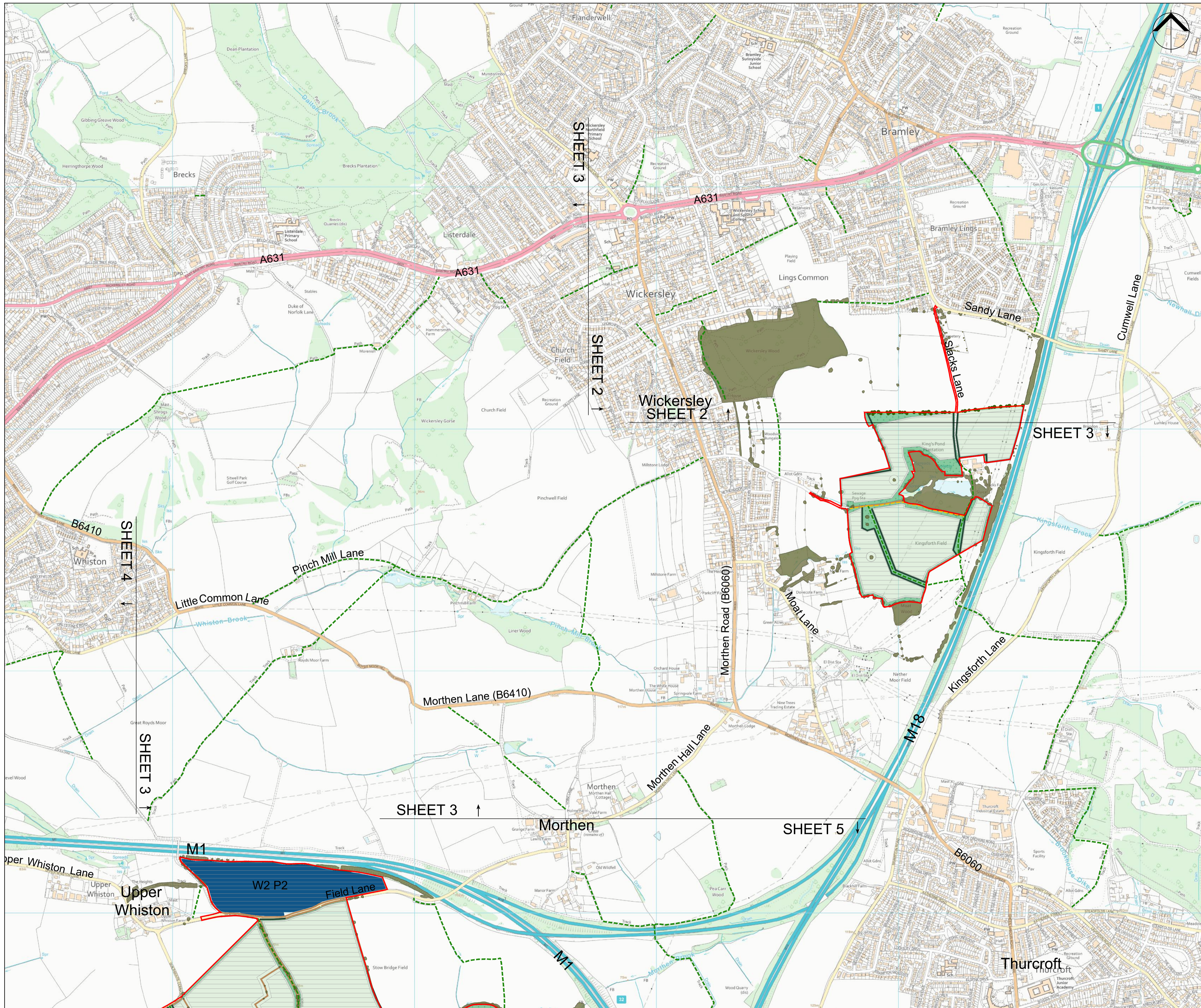


SCALE: 1:7,500	VERSION: A01
SIZE: A1	DRAWN: IE
PROJECT: Whitestone Solar Farm	CHECKED: SG
DATE: 11/09/2025	APPROVED: SG

**Indicative Mitigation Masterplan  
 Sheet 2 of 8  
 Whitestone Solar Farm**



Sources: Esri, TomTom, Garmin, FAO, NOAA, USGS, © OpenStreetMap contributors, and the GIS User Community. Reproduced from Ordnance Survey digital map data © Crown copyright 2025. All rights reserved. License number 0000848182

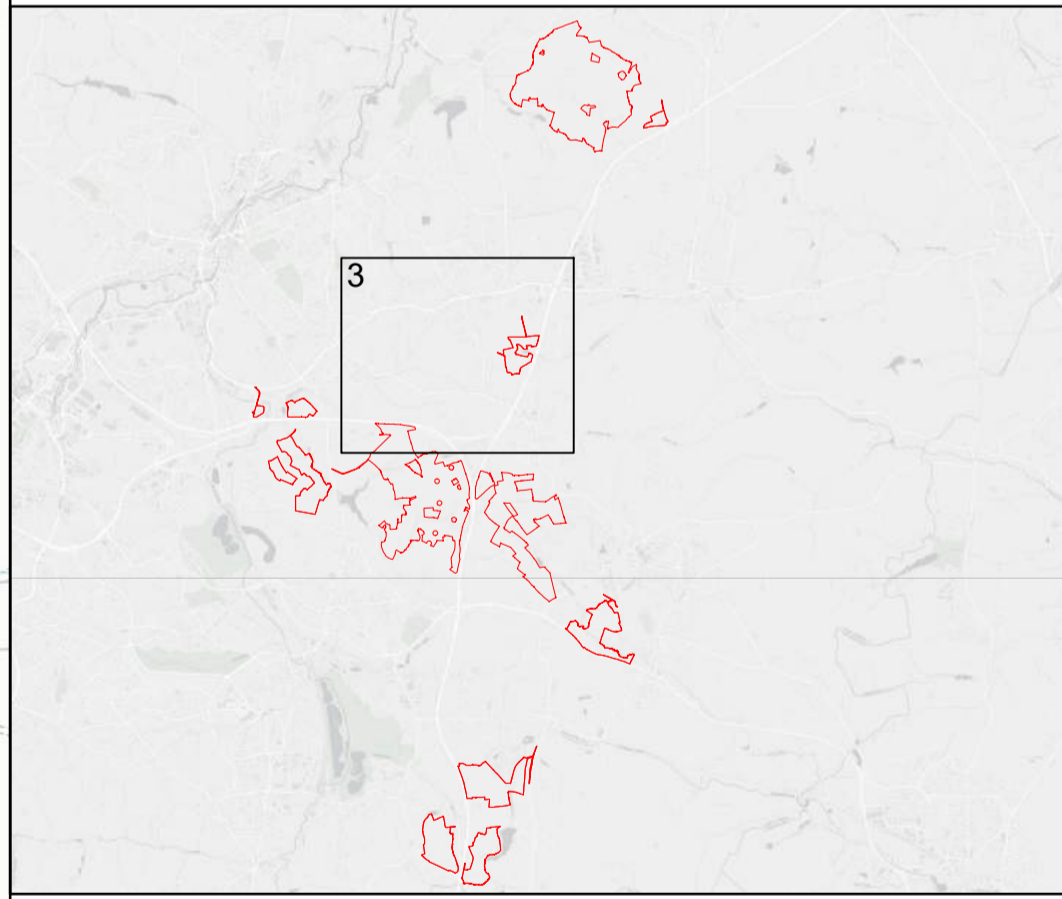


**Key**

- Order Limits
- Potential solar panels and associated infrastructure
- Potential landscape mitigation and enhancement areas
- Existing hedgerows to be retained and enhanced
- Existing vegetation
- Potential hedgerows
- Potential hedgerows with trees
- Potential scattered trees
- Shade tolerant seed mix (below solar panels)
- Existing Public Rights of Way
- Potential permissive paths
- Potential substation and BESS or solar panels
- Potential substation or solar panels
- Potential substation (no potential for solar panels)
- Proposed location for new National Grid substation at Brinsworth (Brinsworth B)
- Potential cable and vehicle crossing points

WX SX Substation reference  
 WS1, 2, 3 = Whitestone 1, 2 and 3  
 S = Satellite substation, P = Primary substation.

Disclaimer: The Proposed DCO Limits are indicative and subject to revision and change

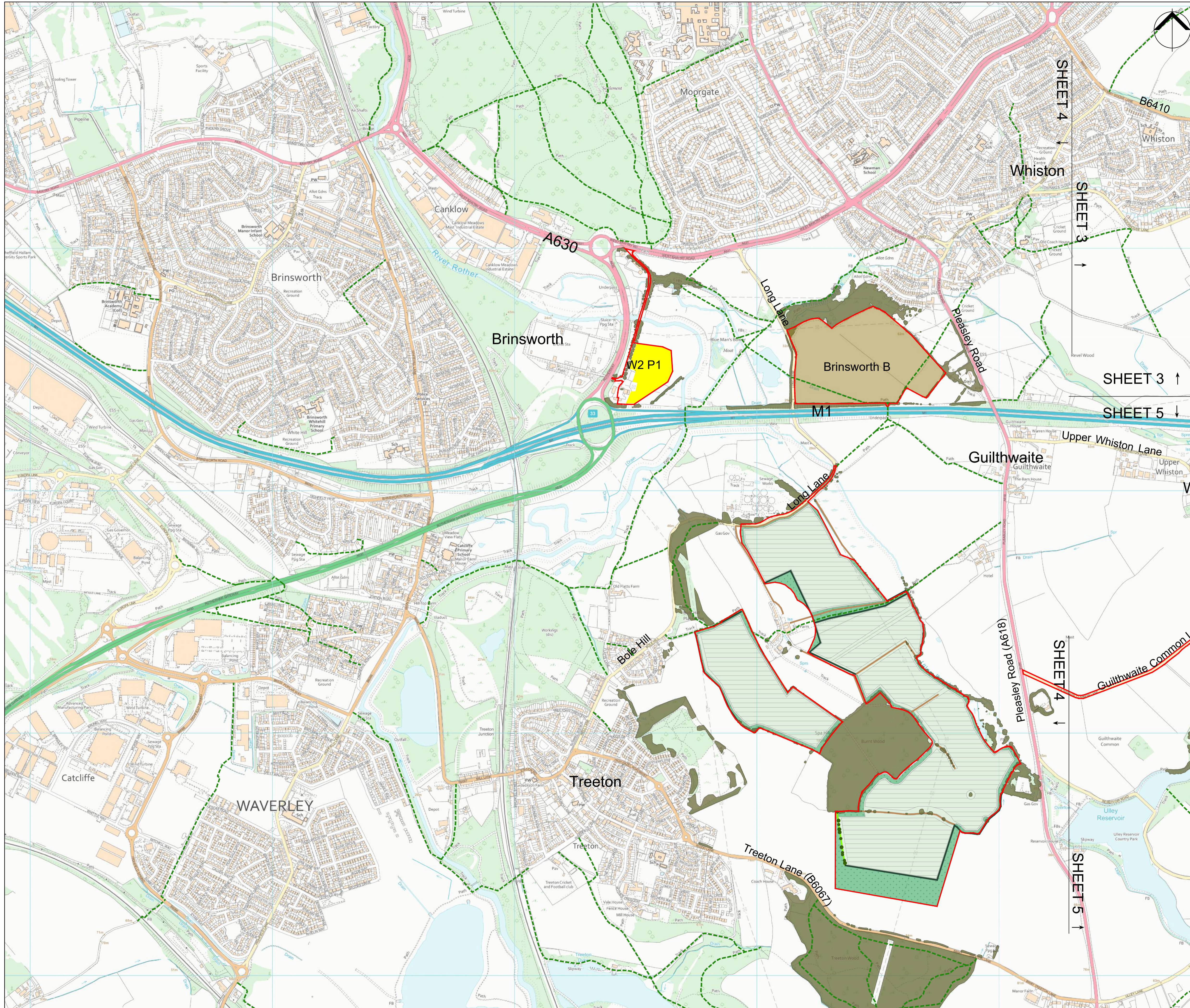


SCALE: 1:7,500	VERSION: A01
SIZE: A1	DRAWN: IE
PROJECT: Whitestone Solar Farm	CHECKED: SG
DATE: 11/09/2025	APPROVED: SG

**Indicative Mitigation Masterplan  
 Sheet 3 of 8  
 Whitestone Solar Farm**



Sources: Esri, TomTom, Garmin, FAO, NOAA, USGS, © OpenStreetMap contributors, and the GIS User Community. Reproduced from Ordnance Survey digital map data © Crown copyright 2025. All rights reserved. License number 0000848182

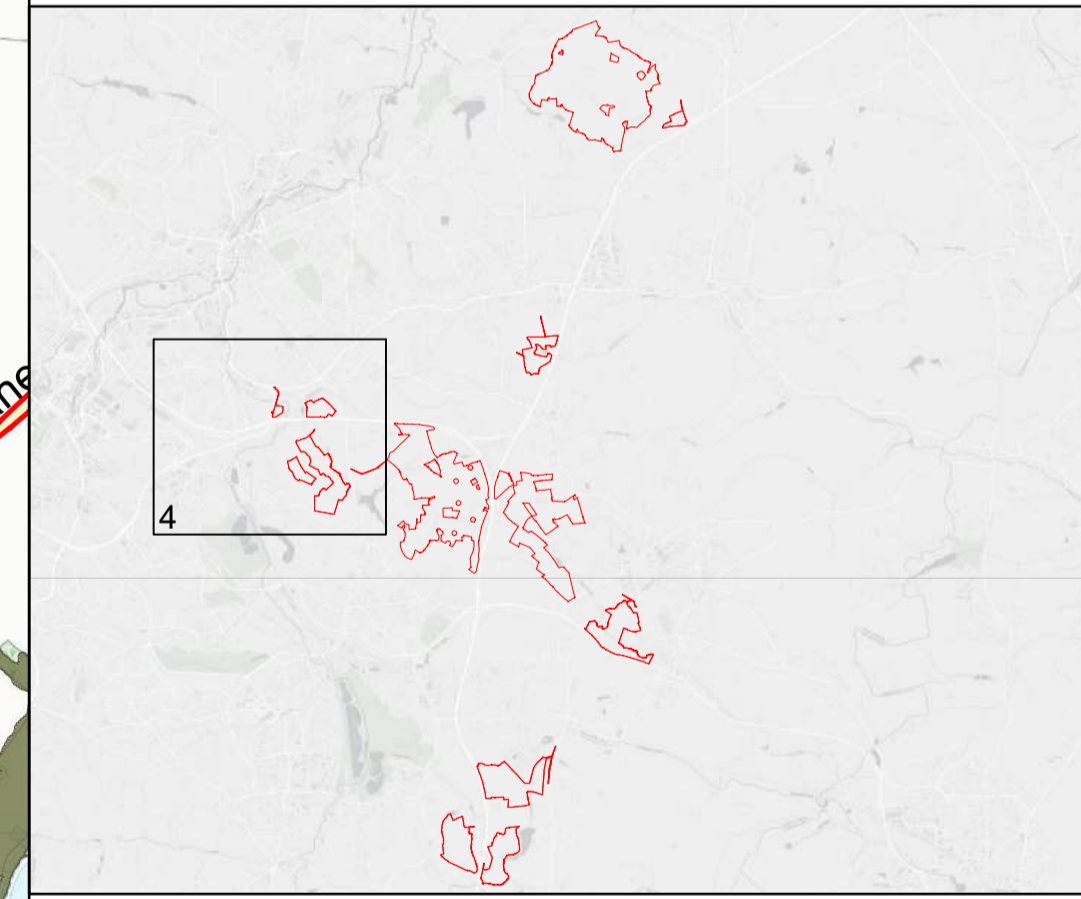


**Key**

- Order Limits
- Potential solar panels and associated infrastructure
- Potential landscape mitigation and enhancement areas
- Existing hedgerows to be retained and enhanced
- Existing vegetation
- Potential hedgerows
- Potential hedgerows with trees
- Potential scattered trees
- Shade tolerant seed mix (below solar panels)
- Existing Public Rights of Way
- Potential permissive paths
- Potential substation and BESS or solar panels
- Potential substation or solar panels
- Potential substation (no potential for solar panels)
- Proposed location for new National Grid substation at Brinsworth (Brinsworth B)
- Potential cable and vehicle crossing points

WX SX Substation reference  
 WS1, 2, 3 = Whitestone 1, 2 and 3  
 S = Satellite substation, P = Primary substation.

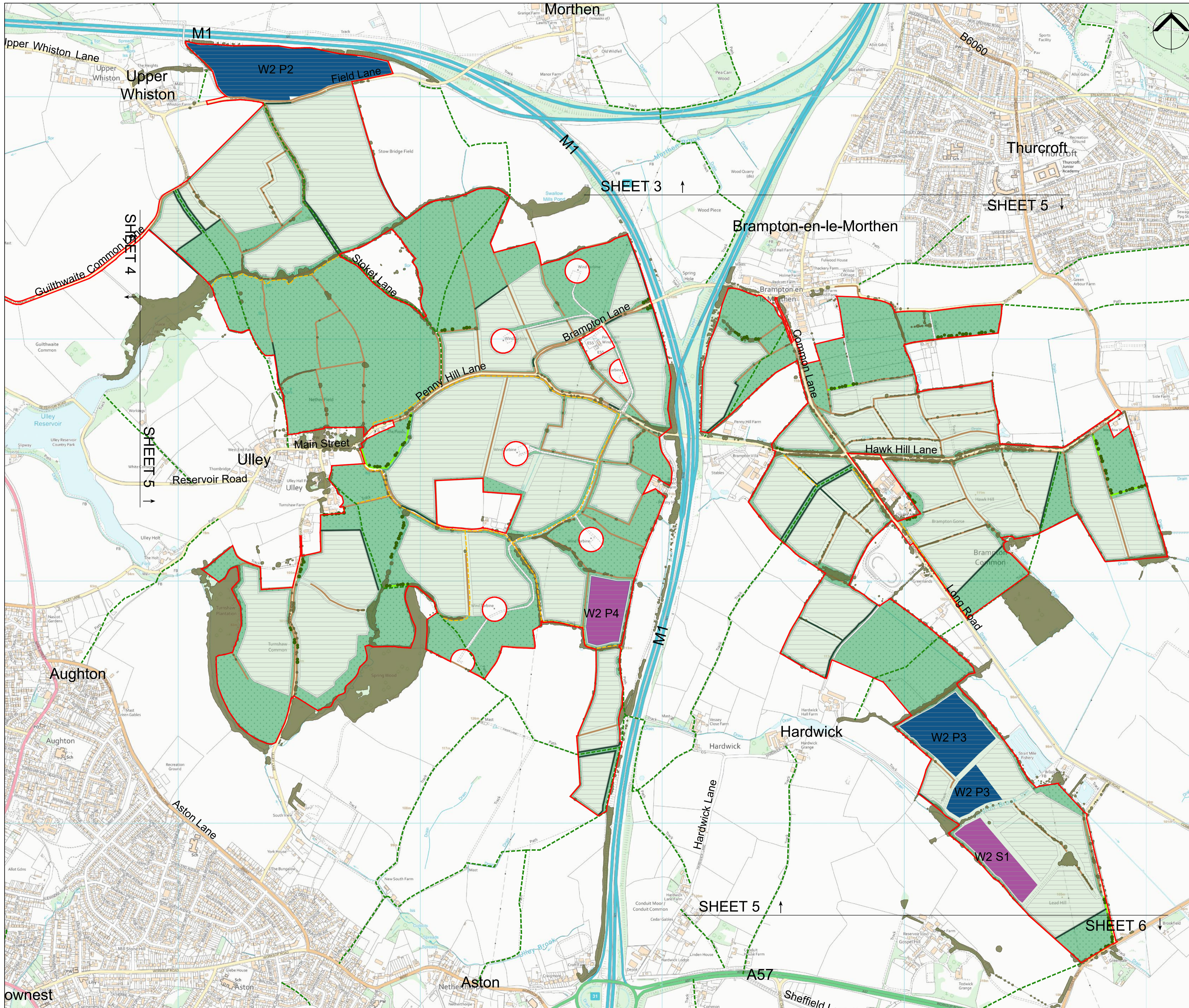
Disclaimer: The Proposed DCO Limits are indicative and subject to revision and change



SCALE: 1:7,500	VERSION: A01
SIZE: A1	DRAWN: IE
PROJECT: Whitestone Solar Farm	CHECKED: SG
DATE: 11/09/2025	APPROVED: SG

**Indicative Mitigation Masterplan  
 Sheet 4 of 8  
 Whitestone Solar Farm**



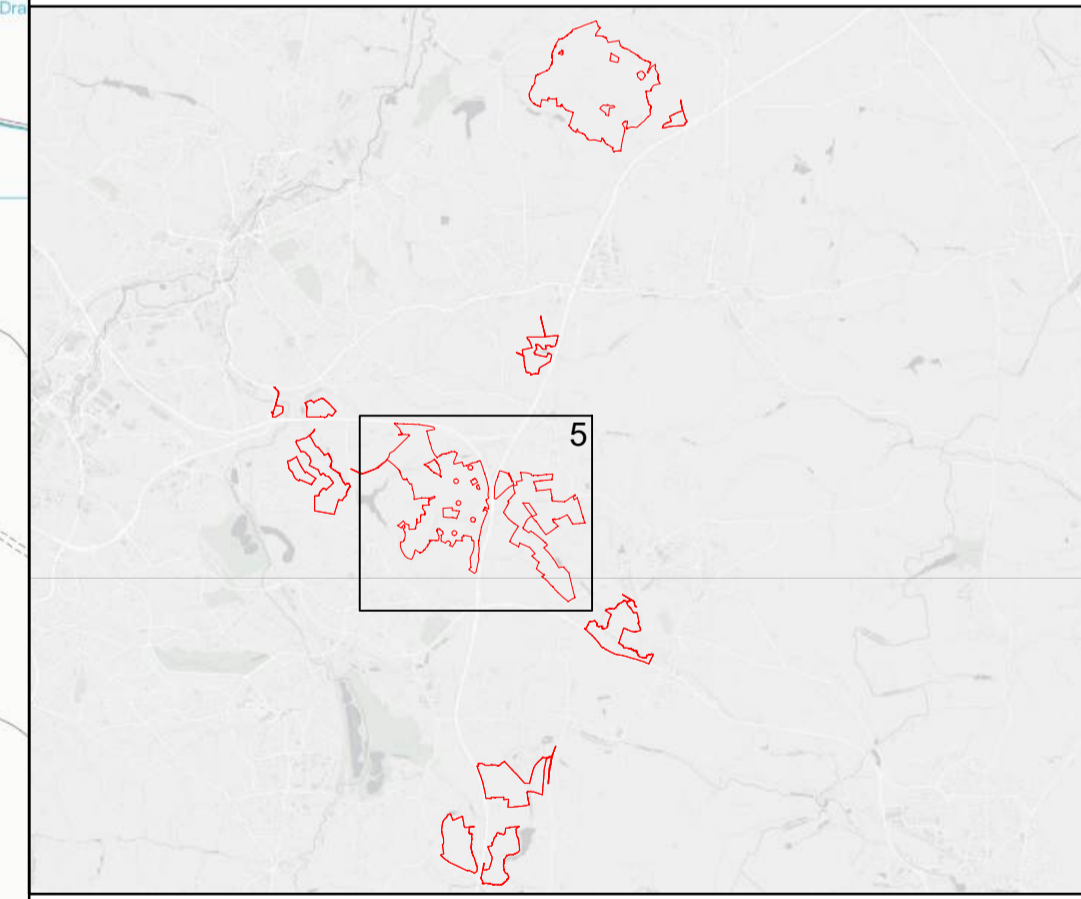


**Key**

- Order Limits
- Potential solar panels and associated infrastructure
- Potential landscape mitigation and enhancement areas
- Existing hedgerows to be retained and enhanced
- Existing vegetation
- Potential hedgerows
- Potential hedgerows with trees
- Potential scattered trees
- Shade tolerant seed mix (below solar panels)
- Existing Public Rights of Way
- Potential permissive paths
- Potential substation and BESS or solar panels
- Potential substation or solar panels
- Potential substation (no potential for solar panels)
- Proposed location for new National Grid substation at Brinsworth (Brinsworth B)
- Potential cable and vehicle crossing points

**WX SX** Substation reference  
 WS 1, 2, 3 = Whitestone 1, 2 and 3  
 S = Satellite substation. P = Primary substation.

Disclaimer: The Proposed DCO Limits are indicative and subject to revision and change

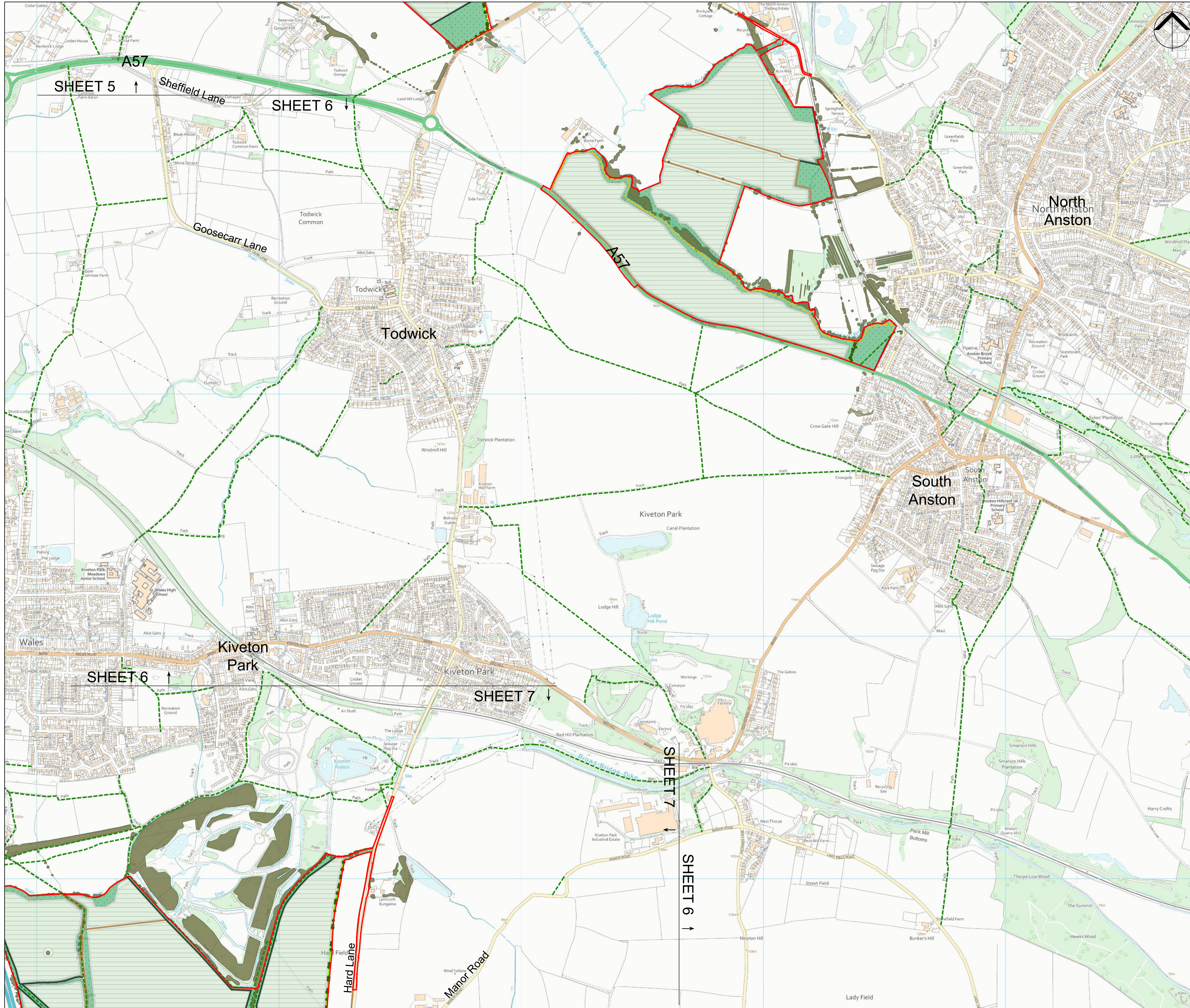


SCALE: 1:7,500	VERSION: A01
SIZE: A1	DRAWN: IE
PROJECT: Whitestone Solar Farm	CHECKED: SG
DATE: 11/09/2025	APPROVED: SG

**Indicative Mitigation Masterplan**  
**Sheet 5 of 8**  
**Whitestone Solar Farm**



Sources: Esri, TomTom, Garmin, FAO, NOAA, USGS, © OpenStreetMap contributors, and the GIS User Community. Reproduced from Ordnance Survey digital map data © Crown copyright 2025. All rights reserved. License number 0000848182

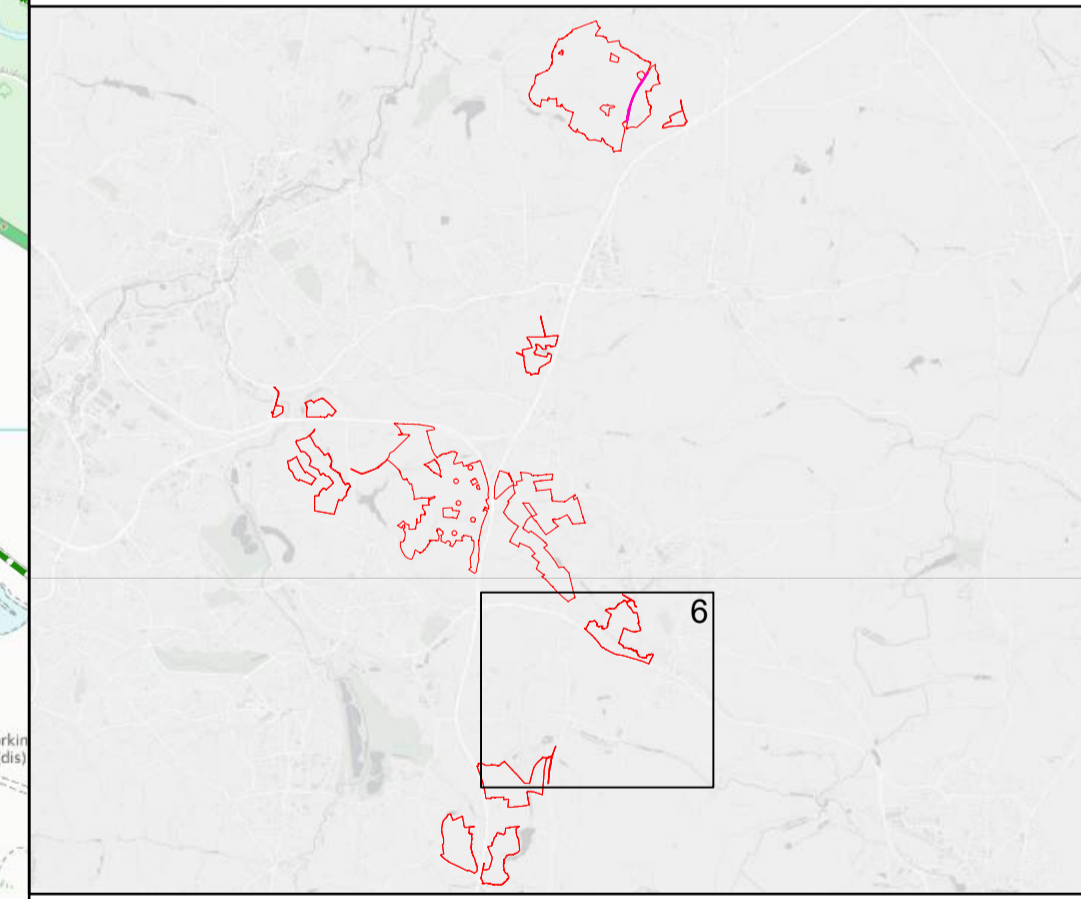


**Key**

- Order Limits
- Potential solar panels and associated infrastructure
- Potential landscape mitigation and enhancement areas
- Existing hedgerows to be retained and enhanced
- Existing vegetation
- Potential hedgerows
- Potential hedgerows with trees
- Potential scattered trees
- Shade tolerant seed mix (below solar panels)
- Existing Public Rights of Way
- Potential permissive paths
- Potential substation and BESS or solar panels
- Potential substation or solar panels
- Potential substation (no potential for solar panels)
- Proposed location for new National Grid substation at Brinsworth (Brinsworth B)
- Potential cable and vehicle crossing points

**WX SX** Substation reference  
 WS1, 2, 3 = Whitestone 1, 2 and 3  
 S = Satellite substation, P = Primary substation.

**Disclaimer:** The Proposed DCO Limits are indicative and subject to revision and change

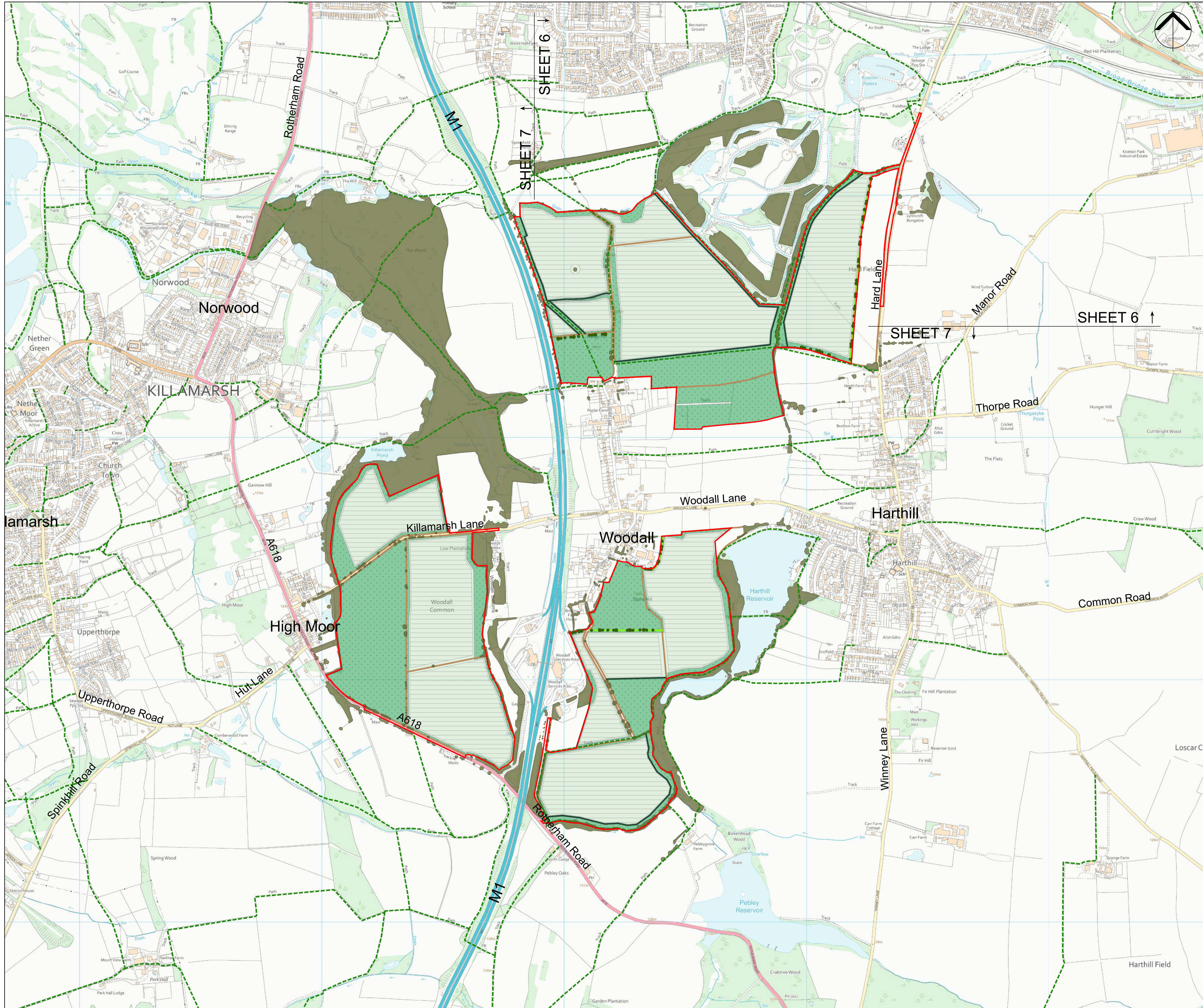


SCALE: 1:7,500	VERSION: A01
SIZE: A1	DRAWN: IE
PROJECT: Whitestone Solar Farm	CHECKED: SG
DATE: 11/09/2025	APPROVED: SG

**Indicative Mitigation Masterplan  
 Sheet 6 of 8  
 Whitestone Solar Farm**



Sources: Esri, TomTom, Garmin, FAO, NOAA, USGS, © OpenStreetMap contributors, and the GIS User Community. Reproduced from Ordnance Survey digital map data © Crown copyright 2025. All rights reserved. License number 0000848182

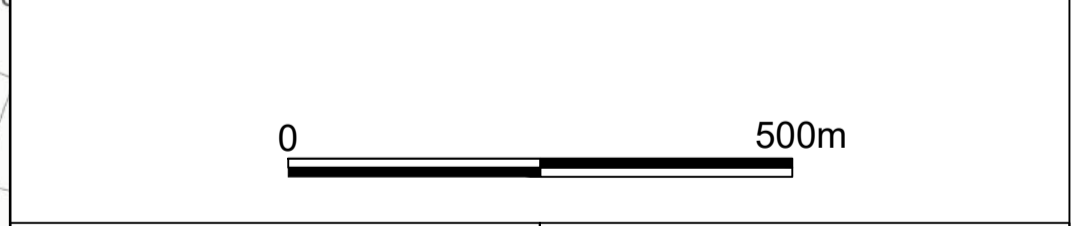
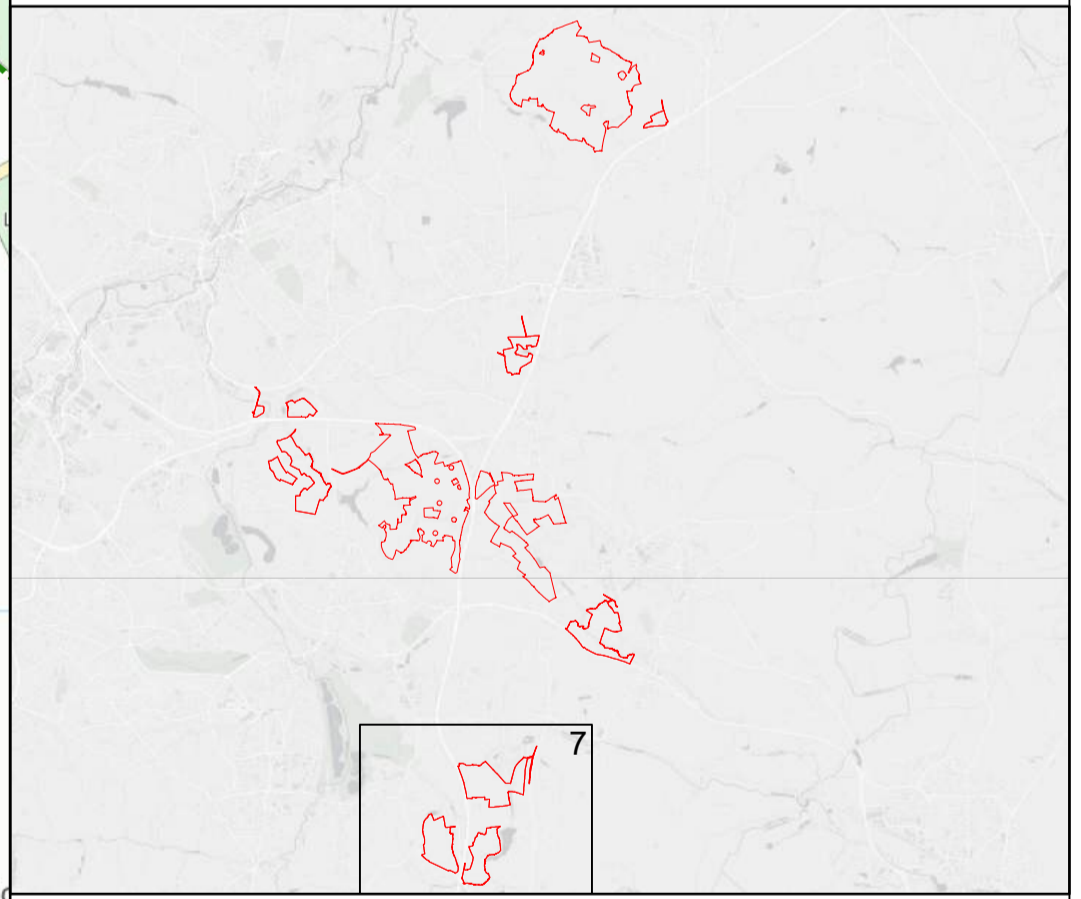


**Key**

- Order Limits
- Potential solar panels and associated infrastructure
- Potential landscape mitigation and enhancement areas
- Existing hedgerows to be retained and enhanced
- Existing vegetation
- Potential hedgerows
- Potential hedgerows with trees
- Potential scattered trees
- Shade tolerant seed mix (below solar panels)
- Existing Public Rights of Way
- Potential permissive paths
- Potential substation and BESS or solar panels
- Potential substation or solar panels
- Potential substation (no potential for solar panels)
- Proposed location for new National Grid substation at Brinsworth (Brinsworth B)
- Potential cable and vehicle crossing points

WX SX Substation reference  
 WS1, 2, 3 = Whitestone 1, 2 and 3  
 S = Satellite substation. P = Primary substation.

Disclaimer: The Proposed DCO Limits are indicative and subject to revision and change

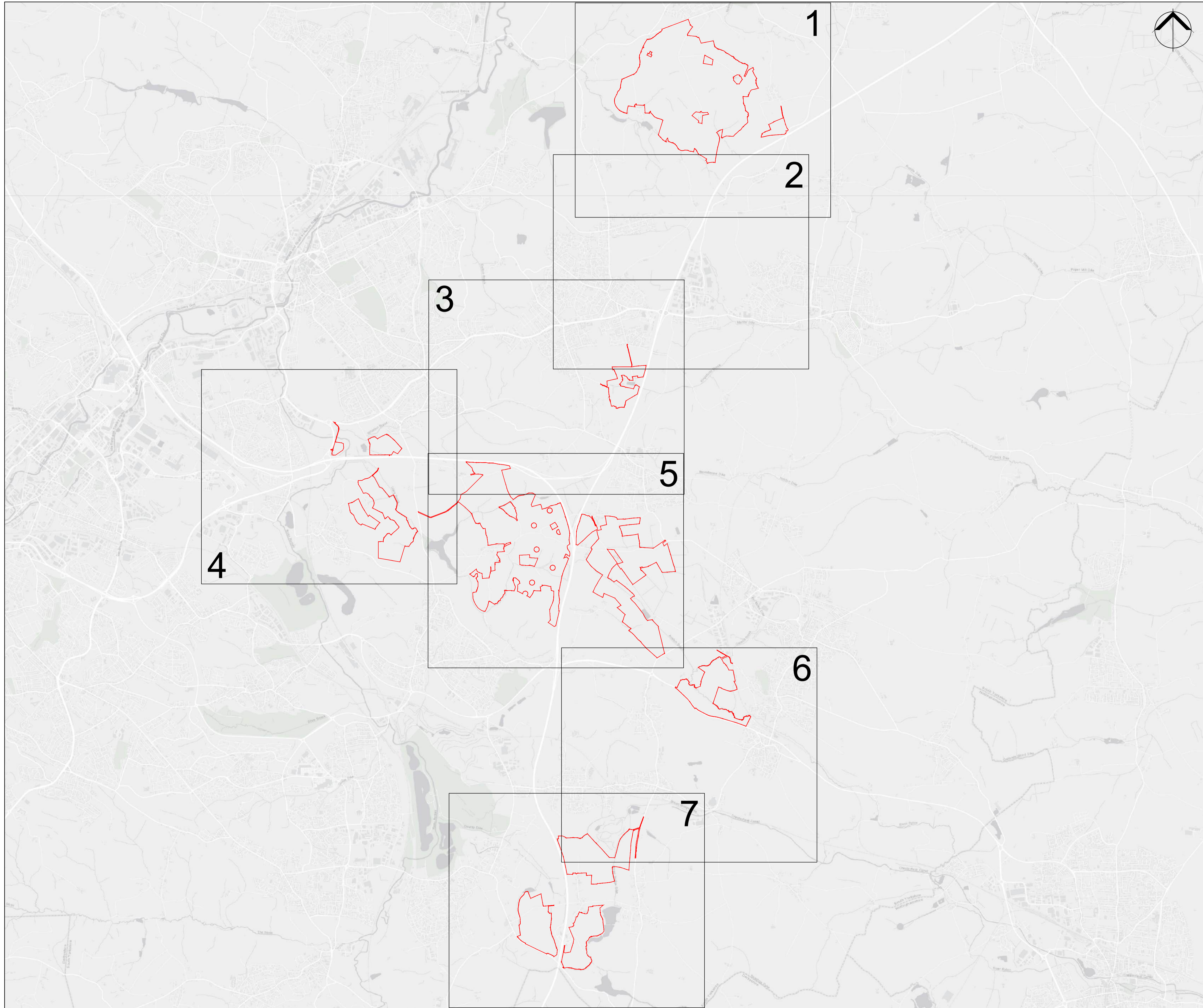


SCALE: 1:7,500	VERSION: A01
SIZE: A1	DRAWN: IE
PROJECT: Whitestone Solar Farm	CHECKED: SG
DATE: 15/09/2025	APPROVED: SG

**Indicative Mitigation Masterplan  
 Sheet 7 of 8  
 Whitestone Solar Farm**



Sources: Esri, TomTom, Garmin, FAO, NOAA, USGS, © OpenStreetMap contributors, and the GIS User Community. Reproduced from Ordnance Survey digital map data © Crown copyright 2025. All rights reserved. License number 0000848182



Key  
 Order Limits

Disclaimer: The Proposed DCO Limits are indicative and subject to revision and change

SCALE: NTS	VERSION: A01
SIZE: A1	DRAWN: IE
PROJECT: Whitestone Solar Farm	CHECKED: SG
DATE: 11/09/2025	APPROVED: SG

**Indicative Mitigation Masterplan**  
**Sheet 8 of 8**  
**Whitestone Solar Farm**





**WHITESTONE**  
solar farm

## Contact

Whitestone Net Zero Ltd

[info@whitestonesolarfarm.co.uk](mailto:info@whitestonesolarfarm.co.uk)

0800 0194 576