



WHITESTONE
solar farm

WHITESTONE SOLAR FARM

Draft Environmental Statement

Volume 3, Appendix 4.2: Design Evolution

EN0110020

September 2025

whitstonesolarfarm.co.uk

DRAFT ENVIRONMENTAL STATEMENT

Document status					
Version	Purpose of document	Authored by	Reviewed by	Approved by	Review date
Rev01	First Draft	ERM	TLT, Pershing, DWD, AECOM		
Rev02	Final	ERM	TLT, DWD, AECOM	Whitestone Net Zero Ltd	15/09/2025

Approval for issue		
Whitestone Net Zero Ltd	JT	15 September 2025

The following report and supporting infographics have been produced by human authors. Artificial Intelligence (AI) has not been used to create or alter the technical meaning of these materials. ERM is technology-enabled and may use technology including AI in service delivery, in compliance with all laws applicable to it. Where AI has been used as an administrative support function, this has been appropriately validated by human authors.

ERM take full ownership and responsibility for the report, notwithstanding that ancillary technology (including AI tools) may have been used in service provision.

Prepared by:

ERM

Prepared for:

Whitestone Net Zero Ltd

Contents

4.2 Design Evolution2

Glossary

Term	Meaning
<i>The Proposed Development</i>	The proposed Whitestone Solar Farm
<i>Stage 1</i>	First design which was held prior to public launch and the first round of public consultation.
<i>Stage 2</i>	The second design relating to updates made in March 2025 following feedback from the first round of public consultation.
<i>Non-statutory Consultation</i>	The first round of consultation held from 18 November 2024 to 31 January 2025
<i>Cable Corridor Options</i>	Corridors identified within which the connecting cables could be constructed.

4.2 Design Evolution

Design Stages

- 4.2.1 This appendix presents the previous design iterations for Whitestone Solar Farm (the Proposed Development). The designs presented below are:
- Stage 1 design (September 2024); and
 - Stage 2 design (March 2025).
- 4.2.2 The current design (Stage 3 – August 2025) is presented in **Volume 3, Appendix 5.1: Indicative Operation Masterplan**.

Stage 1 Design

- 4.2.3 Stage 1 design is presented in the illustrative masterplan which was presented to stakeholders and local communities during the first round of consultation (Non-Statutory Consultation) which occurred from 18 November 2024 to 31 January 2025. The cable corridors identified at this stage of design were also presented at Non-Statutory Consultation. The illustrative masterplan and indicative cable routes identified at Stage 1 are shown in the following four pages.



Old Denaby

Conaby

Conisbrough

A630

Hooton
Roberts

Old Edlington

Clifton

M16

Thrybergh








Ravenfield

Micklebring

Braithwell

M16

KEY

	Potential Site
	Potential solar panels and associated infrastructure
	Potential landscape mitigation and enhancement
	Potential solar panels - area to be designed through consultation
	Public Rights of Way
	Sustrans National Cycle Network
	Existing overhead power lines





Brinsworth

A630

M1

Whiston

Geunwale

Upper Whiston

Meinen

High

Slade Hooton

Brookhouse

Thurston

Langthorpe-le-Morthen

Laughton le Morthan

Trenton

Ureby

Laughton Common

Wington

Harrowton

Dinnington

Swallownest

Aston

A57

North Anston





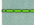
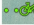

A57

Todwick

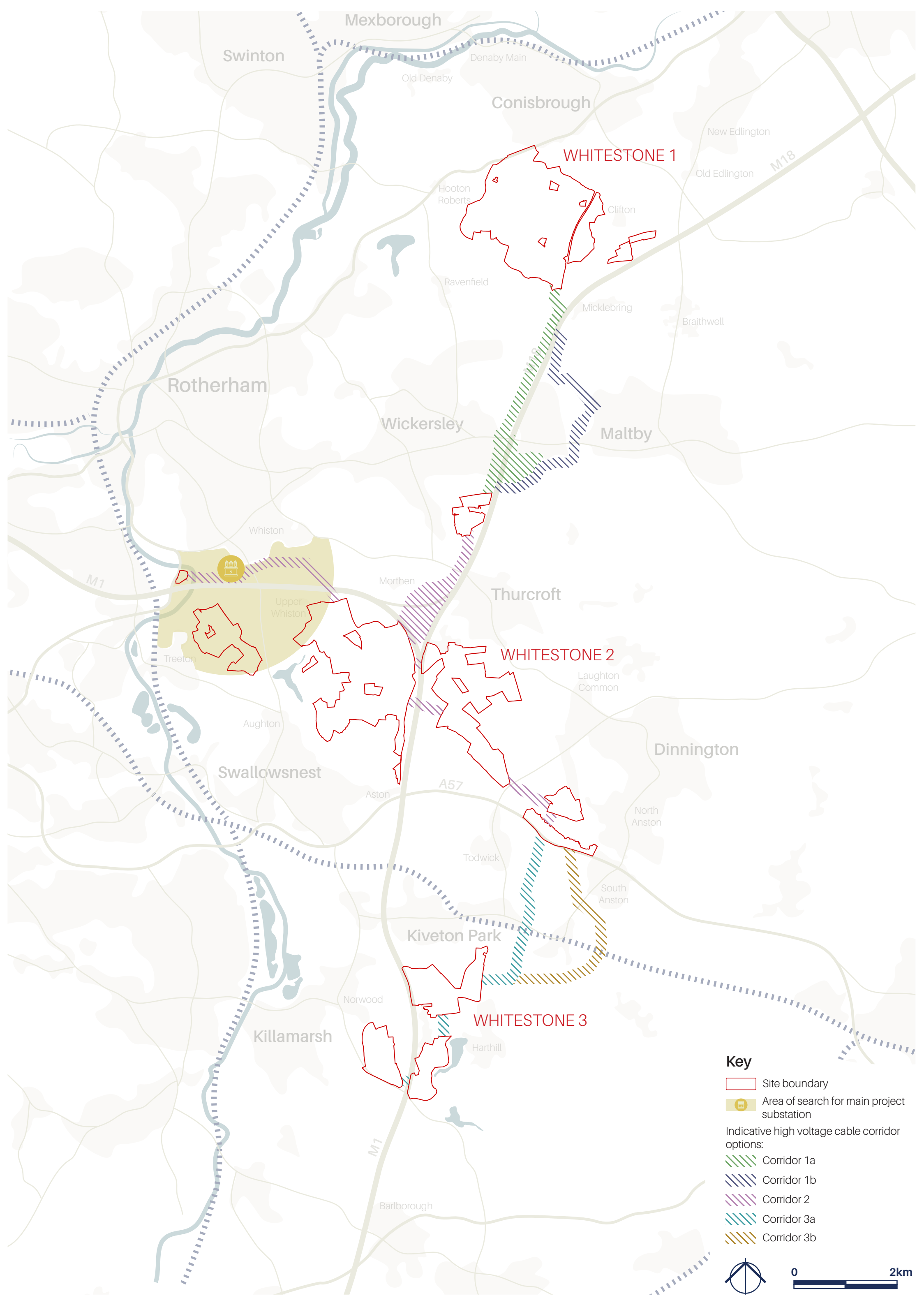
South Anston

- KEY**
- Potential Site
 - Potential solar panels and associated infrastructure
 - Potential landscape mitigation and enhancement
 - Potential solar panels - area to be designed through consultation
 - Public Rights of Way
 - Sustrans National Cycle Network
 - Existing overhead power lines



- KEY**
-  Potential Site
 -  Potential solar panels and associated infrastructure
 -  Potential landscape mitigation and enhancement
 -  Potential solar panels - area to be designed through consultation
 -  Public Rights of Way
 -  Sustrans National Cycle Network
 -  Existing overhead power lines





Swinton

Mexborough

Denaby Main

Old Denaby

Conisbrough

New Edlington

Old Edlington

M18

WHITESTONE 1

Hooton Roberts

Clifton

Ravenfield

Micklebring

Braithwell

Rotherham

Wickersley

Maltby

Whiston

Morthen

Thurcroft

M1

WHITESTONE 2

Upper Whiston

Laughton Common

Treeton

Aughton

Dinnington

Swallowsnest

Aston

A57

North Anston

Aughton

South Anston

Kiveton Park

Todwick

Harthill

Killamarsh

Norwood

WHITESTONE 3

M1

Barlborough

Key

- Site boundary
- Area of search for main project substation
- Indicative high voltage cable corridor options:
 - Corridor 1a
 - Corridor 1b
 - Corridor 2
 - Corridor 3a
 - Corridor 3b

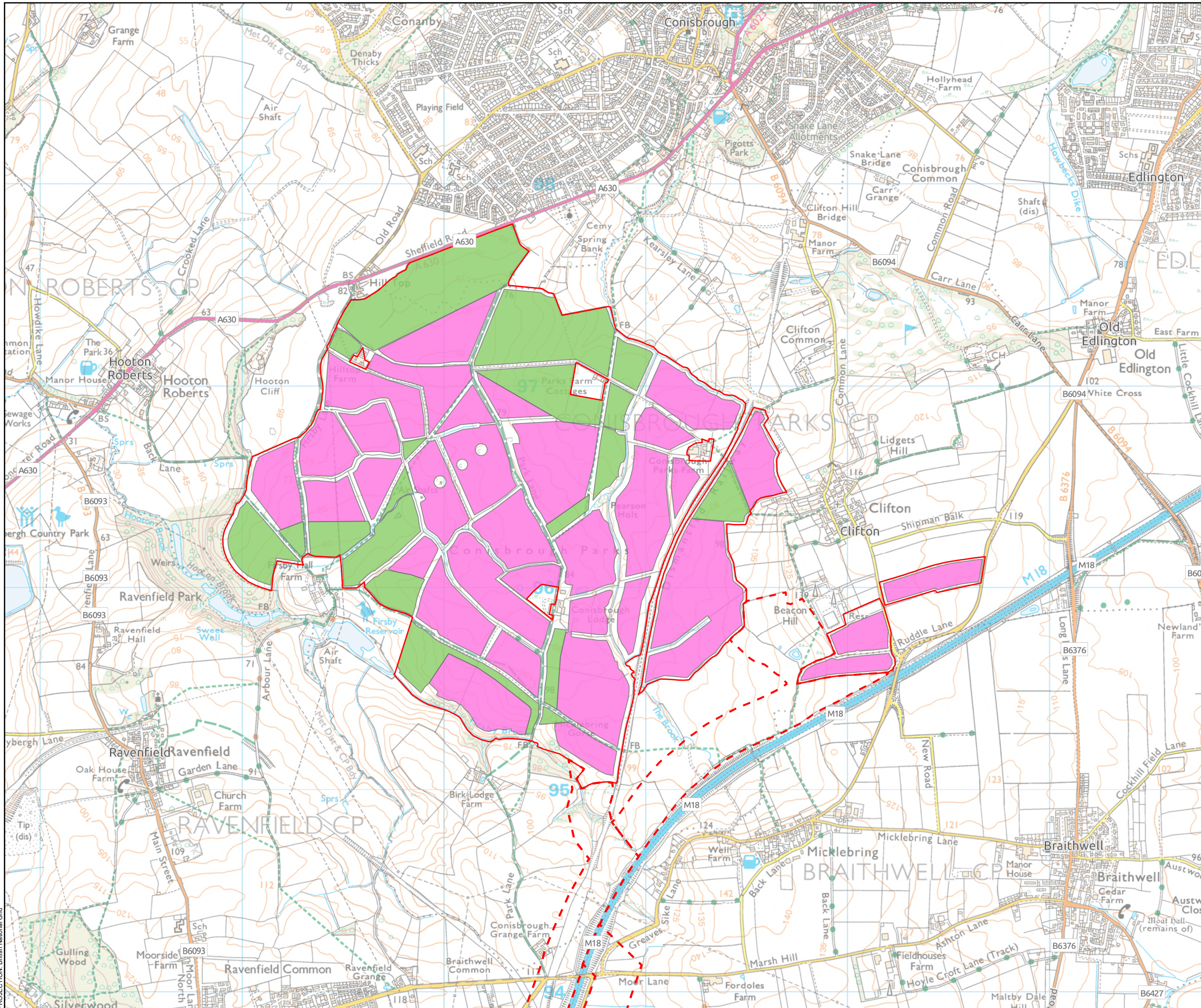


0 2km

Stage 2 design

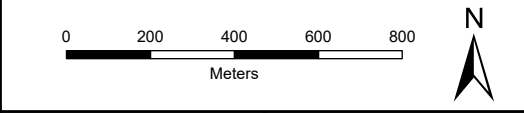
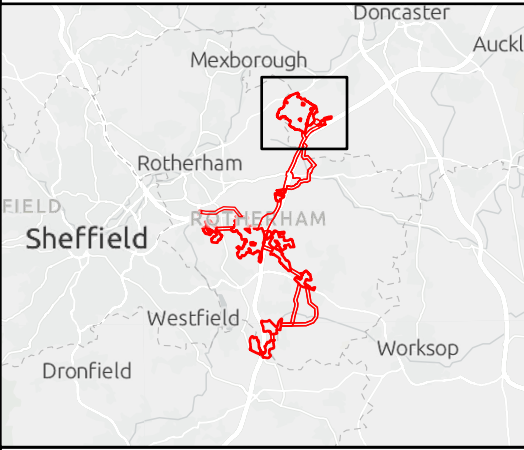
4.2.1.1.1.2 Stage 2 design is presented in the indicative developable areas figures which were submitted as part of the EIA Scoping Report (**Volume 3, Appendix 2.1, EIA Scoping Report**) submitted to the Planning Inspectorate on 23 April 2025. The cable corridors identified at this stage of design were also presented in the EIA Scoping Report, and have been included here in the Site Referencing figure. The indicative developable areas and referencing figures showing the Stage 2 design are presented in the following four pages¹.

¹ Note: These figures have been extracted from the EIA Scoping Report so numbering does not accord with this Draft Environmental Statement.



- Site Boundary
- Cable Corridor Options
- Indicative Developable Areas
- Indicative Mitigation and Enhancement Areas

Disclaimer: The Proposed DCO Limits are indicative and subject to revision and change

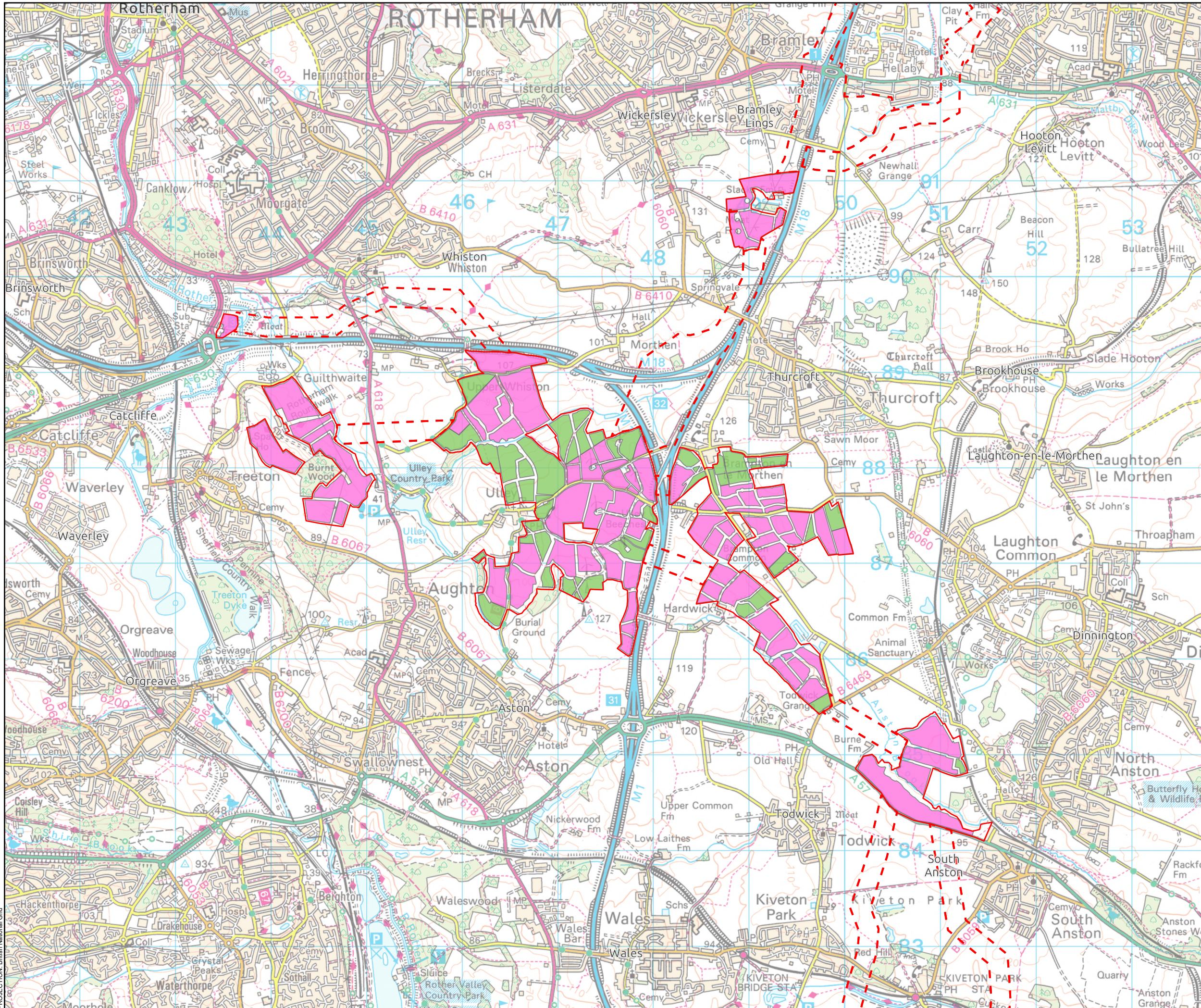


SCALE: See Scale Bar SIZE: A3 PROJECT: 0720724 DATE: 22/04/2025	VERSION: A01 DRAWN: RW CHECKED: HT APPROVED: SK
--	--

Figure 5.1
Indicative Developable Areas: Whitestone 1
Scoping Report
Whitestone Solar Farm

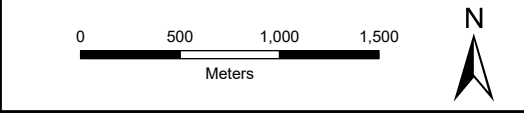
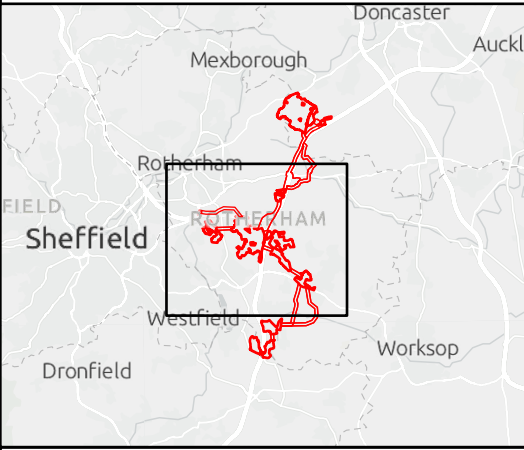
ERM

WHITESTONE
solar farm



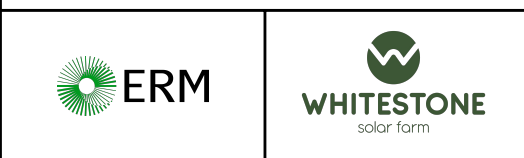
- Site Boundary
- Cable Corridor Options
- Indicative Developable Areas
- Indicative Mitigation and Enhancement Areas

Disclaimer: The Proposed DCO Limits are indicative and subject to revision and change

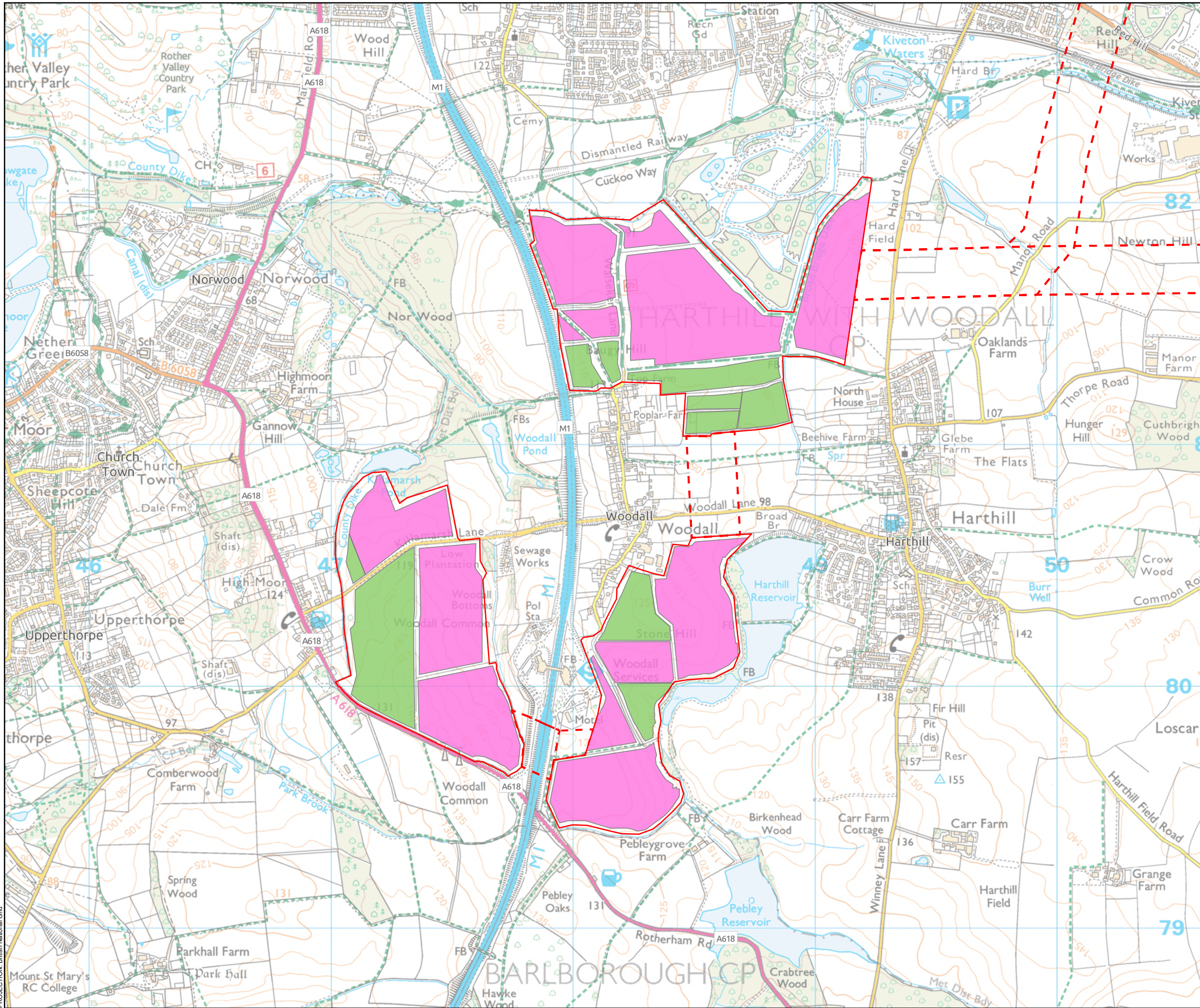


SCALE: See Scale Bar	VERSION: A01
SIZE: A3	DRAWN: RW
PROJECT: 0720724	CHECKED: HT
DATE: 22/04/2025	APPROVED: SK

Figure 5.2
Indicative Developable Areas: Whitestone 2
Scoping Report
Whitestone Solar Farm

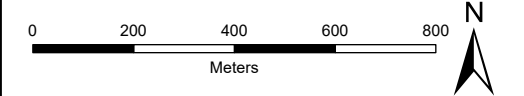
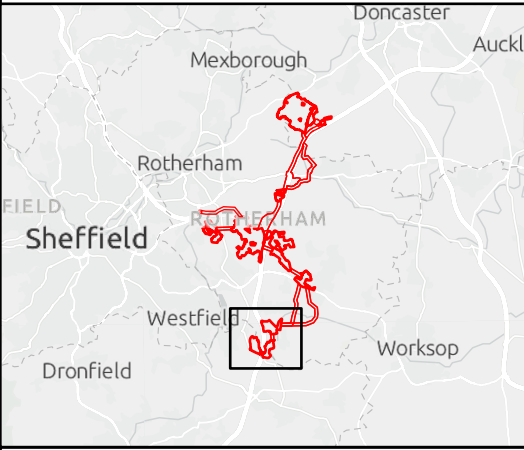


PROJECTION: British National Grid



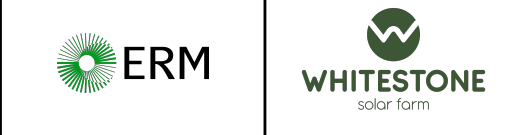
- Site Boundary
- Cable Corridor Options
- Indicative Developable Areas
- Indicative Mitigation and Enhancement Areas

Disclaimer: The Proposed DCO Limits are indicative and subject to revision and change

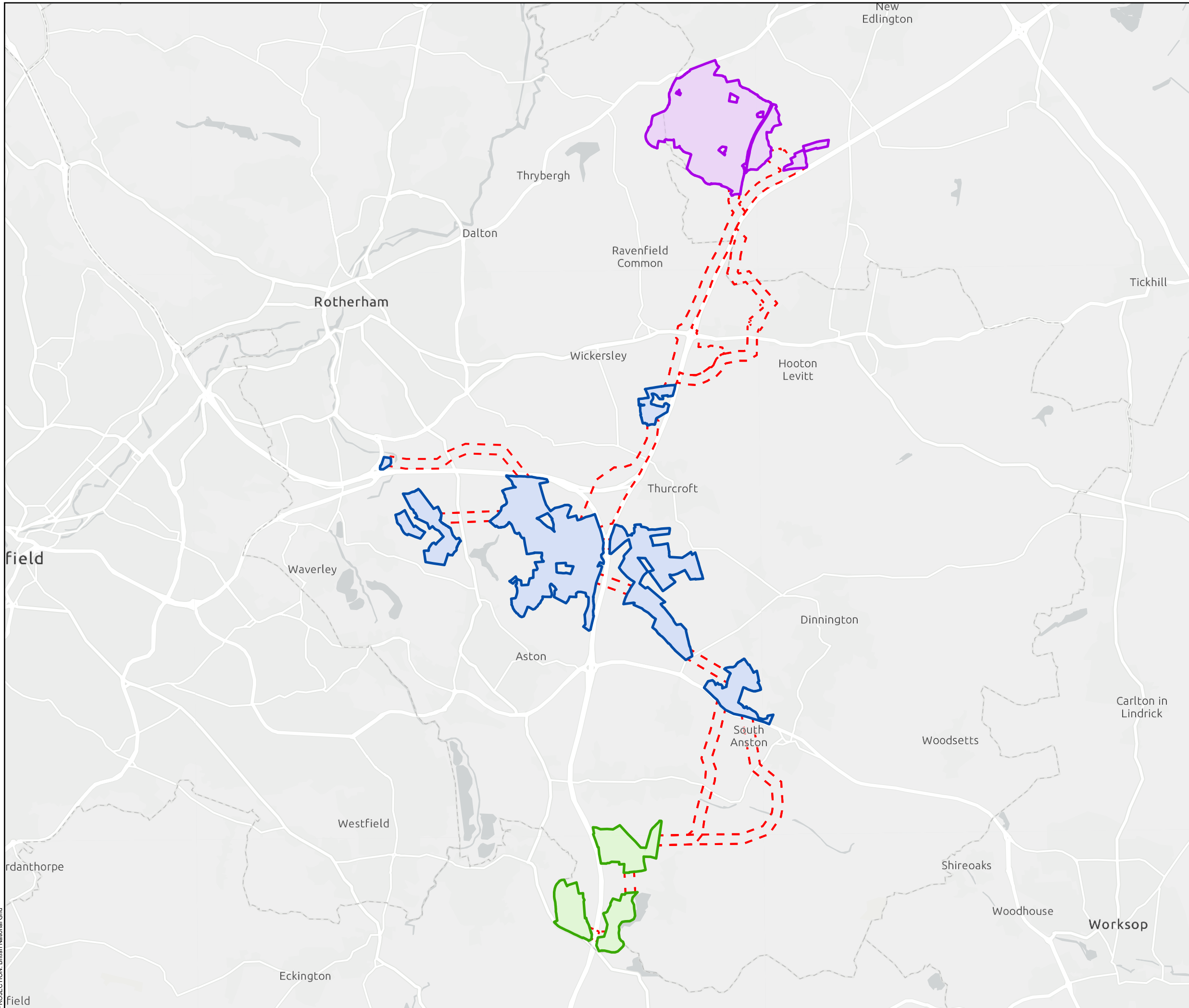


SCALE: See Scale Bar	VERSION: A01
SIZE: A3	DRAWN: RW
PROJECT: 0720724	CHECKED: HT
DATE: 22/04/2025	APPROVED: SK

Figure 5.3
Indicative Developable Areas: Whitestone 3
Scoping Report
Whitestone Solar Farm

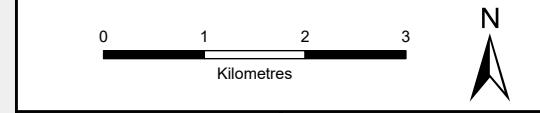


PROJECTION: British National Grid



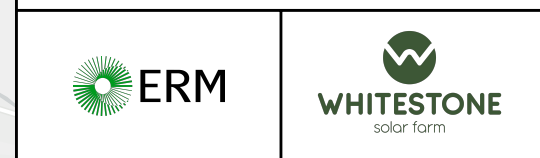
- DCO Limits
- Site Boundary - Whitestone 1
 - Site Boundary - Whitestone 2
 - Site Boundary - Whitestone 3
 - Cable Corridor Options

Disclaimer: The Proposed DCO Limits are indicative and subject to revision and change



SCALE: See Scale Bar	VERSION: A01
SIZE: A3	DRAWN: RW
PROJECT: 0720724	CHECKED: HT
DATE: 22/04/2025	APPROVED: SK

Figure 3.1
Site Referencing: Overview
Scoping Report
Whitestone Solar Farm



PROJECTION: British National Grid



WHITESTONE
solar farm

Contact

Whitestone Net Zero Ltd

info@whitestonesolarfarm.co.uk

0800 0194 576