



**WHITESTONE**  
solar farm

# Whitestone Community Update Newsletter

March 2025

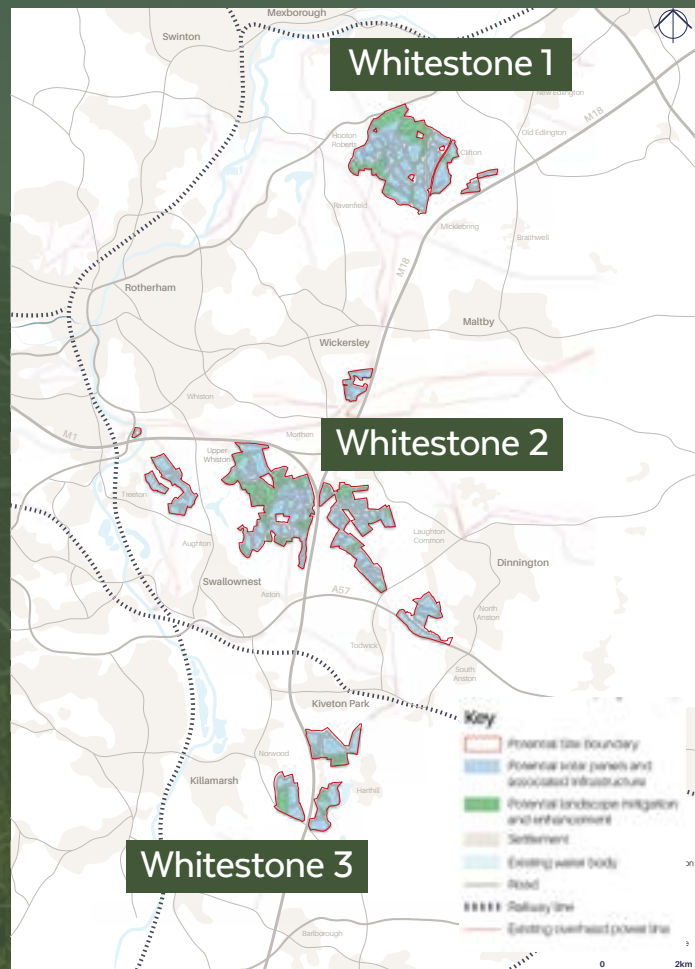
We recently completed our first consultation for Whitestone Solar Farm and have made significant changes to the project design to respond to the feedback we received. Please read on to learn more about the consultation, the updated design, and the project's next steps.

## INTRODUCTION TO WHITESTONE SOLAR FARM

Whitestone is a proposed solar farm with battery storage that would be located in South Yorkshire between Rotherham and Doncaster. Because of its size, Whitestone is classified as a Nationally Significant Infrastructure Project (NSIP), which means that we must apply for a Development Consent Order (DCO) to authorise its construction, operation and decommissioning. The final decision on our DCO application will be made at the national level by the Secretary of State for Energy Security and Net Zero, but local authorities and members of the community have a significant role to play in the development process to ensure that local knowledge is built into the project design.

## CONSULTATION SUMMARY

During our first consultation from 18 November 2024 to 31 January 2025, we presented our initial proposals for Whitestone Solar Farm. We want to thank everyone who took the time to engage with the consultation, to learn more about our proposals and provide their feedback.



702



individuals attended  
8 public events

940



feedback responses

## Draft Masterplan, Whitestone 2

We have reviewed all of the feedback we received and made significant changes to the project design.

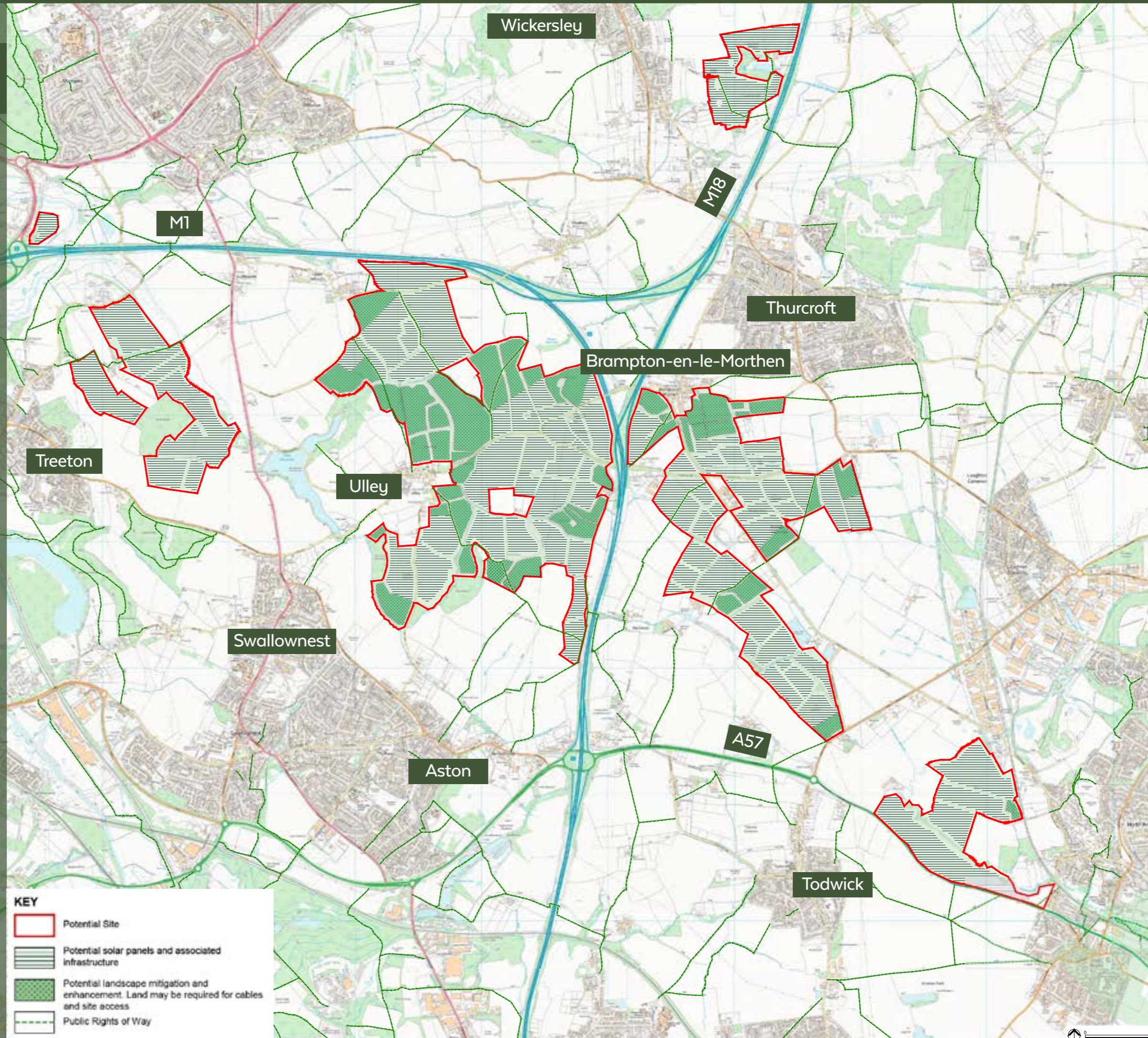
We have removed around one fourth of the land (279 hectares / 689 acres) across the whole site that was included for solar development to create buffers around homes, villages and public rights of way near the project boundary.

These areas would not have any solar panels or other above-ground infrastructure. Some will now be set aside for environmental enhancement and mitigation, and would be planted with a mix of native grasses and wildflowers to support wildlife and increase biodiversity.

In addition to the offsets we had already included around hedgerows, public footpaths and other environmental features, the area for solar development and associated infrastructure would now only account for around half of the total updated site area.

Please note that the map on the following page is of the section of the project that is nearest your address. To view other sections of the project, please visit our website:

[whitstonesolarfarm.co.uk](http://whitstonesolarfarm.co.uk)



## Next steps

We will soon begin our environmental assessments, based on this updated design. We will submit our 'Scoping Report' to the Planning Inspectorate, which will identify the key potential environmental impacts, our approach to assessing their significance and the steps we will take to reduce them through good design. As part of this, we have started to consult with relevant environmental statutory stakeholders. The Planning Inspectorate will respond back to us with their views on our approach in a 'Scoping Opinion', which will then form the basis for completing the environmental assessments.

Later this autumn, we will hold a second consultation on our updated proposals and the preliminary results of the environmental assessments. During this consultation, which will be considered 'statutory', we will consult with the community, elected officials, and technical experts to fact check our initial results and help inform the final assessments that we will submit in our DCO application. When we get closer to the autumn, we will notify the community of the details of the consultation and how you can take part.

## Get in Touch

Please contact the project team with any questions you may have.



0800 688 9936



info@whitestonesolarfarm.co.uk



whitestonesolarfarm.co.uk



**WHITESTONE**  
solar farm

whitestonesolarfarm.co.uk